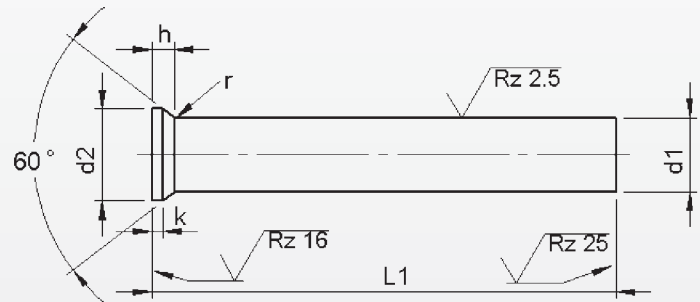
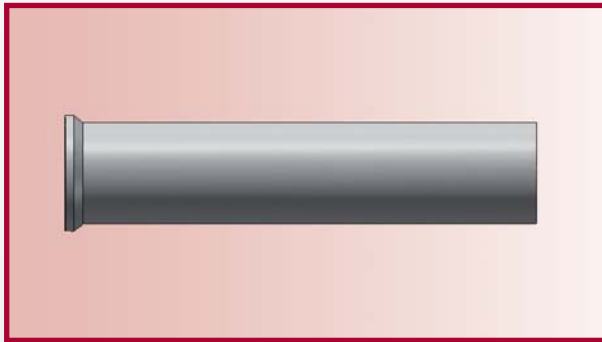


Punches

DIN 9861 HSS



Material: HSS (1.3343)
Hardness: Shaft: 64 ±2 HRC
 Head: 50 ±5 HRC

d ₁ h6	+	d ₂ +0.05 -0.05	k +0.2 0	l ₁ ^{+0.5} ₀					
				71	80	90	100	120	150
				Price by piece in EUROS					
13.5	+	14.0	1.5	9,40	10,25	11,70	13,05	18,75	28,15
14.5	+	15.0		10,05	11,05	12,55	14,05	20,10	30,10
15.5	+	16.0		11,25	12,35	14,05	15,75	22,50	33,75
16.5		19.0	2.0	11,55	12,70	14,45	16,15	23,10	34,65
17.0		19.5		11,55	12,70	14,45	16,15	23,10	34,65
17.5		20.0		12,30	13,55	15,40	17,25	24,60	36,90
18.0		20.5		12,30	13,55	15,40	17,25	24,60	36,90
18.5		21.0		13,05	14,35	16,30	18,25	26,10	29,10
19.0		21.5		13,05	14,35	16,30	18,25	26,10	29,10
19.5		22.0		13,80	15,20	17,25	19,35	27,60	42,90
20.0		22.5		13,80	15,20	17,25	19,35	27,60	42,90
20.5		23.0		14,55	16,00	18,15	20,35	29,00	43,50
21.0		23.5		14,90	16,00	18,15	20,35	29,00	44,70
21.5		24.0		15,30	16,80	19,10	21,40	30,60	45,90
22.0		24.5		15,30	16,80	19,10	21,40	30,60	45,90
22.5		25.0		16,05	17,20	20,05	22,45	21,10	48,15
23.0		25.5		16,05	17,20	20,05	22,45	32,10	48,15
23.5		26.0		16,80	18,45	20,95	23,50	33,60	50,40
24.0		26.5	16,80	18,45	20,95	23,50	33,60	50,40	
24.5		27.0	17,55	19,30	21,90	24,55	35,10	52,65	
25.0		27.5	17,55	19,30	21,90	24,55	35,10	52,65	

Intermediate diameters, other lengths and special materials e.g. ASP, CPM and Vanadis, are available on request.

Extra charges and discounts:

- 1 Pieces per dimension + 50%
- 2-3 Pieces per dimension + 25%
- 25 Pieces per dimension - 5%
- 50 Pieces per dimension - 7%
- 100 Pieces per dimension - 10%