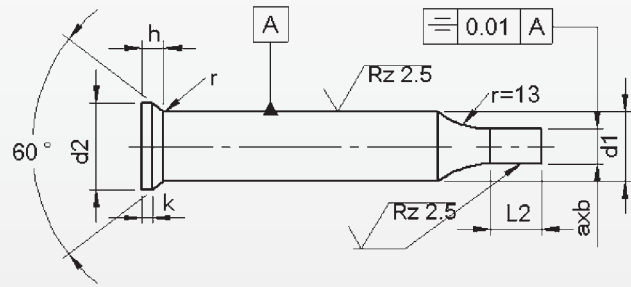
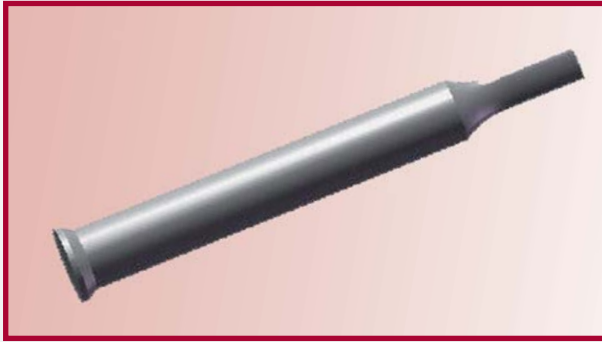


# Reduced shaft 'Form' DIN 9861

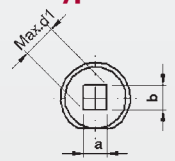
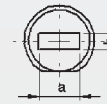
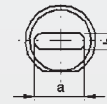
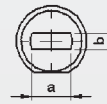


Type ..F

Type ..O

Type ..R

Type ..S



d <sub>1</sub>	axb		l <sub>2</sub> <sup>0.5</sup> <sub>0</sub>		Price by piece in EUROS			
	≥	± 0.01 —	≤	10	13	17	Locking flat	
5	2,5	—	4,9	•			15,75	3,95
6	3,0	—	5,9	•			15,75	3,95
8	4,0	—	7,9		•		21,00	5,25
10	5,0	—	9,9			•	21,00	5,25
13	9,0	—	12,9			•	21,00	5,25
16	12,0	—	15,9			•	21,00	5,25
20	16,0	—	19,9			•	31,50	7,90
25	20,0	—	24,9			•	36,75	9,20
32	27,0	—	31,9			•	42,05	10,50
38	33,0	—	37,9			•	42,05	10,50

L<sub>2</sub> max is 7 times size b, however never longer than 40 mm.

Punches with locking flat against extra charge.

Without detailed specifications the locking is parallel to the major flat axis of surface 'a'.