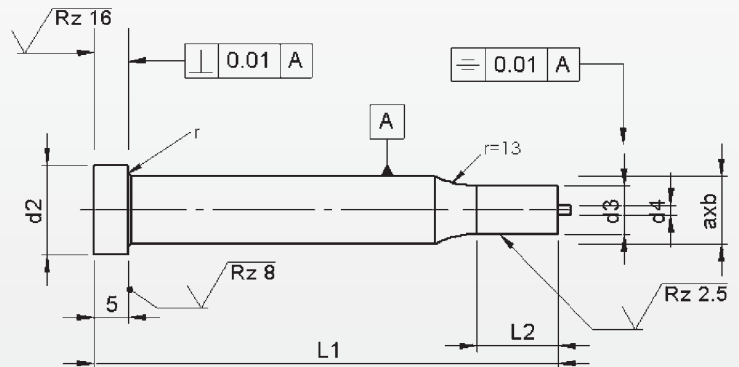


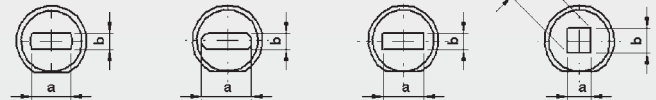
Punches ISO 8020 / Typ EK..

With ejector with reduced shaft 'Form'



Material: HSS (1.3343)
Hardness: Shaft: 64 ±2 HRC
 Head: 50 ±5 HRC

Type EKF Type EKO Type EKR Type EKS



d ₁	axb		l ₂	l ₁ ^{+0.5} / _{+0.2}					
				63/71	80	90	100	120	Locking flat
m5	b ≥	a ≤	+0.5 0	Price by piece in EUROS					
5	2.5	4.9	10	32,00	33,65	35,45	37,40		3,95
6	3.0	5.9	10	31,80	33,45	35,20	37,15		3,95
8	4.0	7.9	13	37,20	38,85	40,60	42,60	46,90	5,25
10	5.0	9.9	17	38,55	40,30	42,20	44,35	49,00	5,25
13	9.0	12.9	17	40,95	42,90	45,10	47,50	52,80	5,25
16	12.0	15.9	17	43,60	45,85	48,35	51,10	57,10	5,25
20	16.0	19.9	17	57,15	59,70	62,50	65,60	72,45	7,90
25	20.0	24.9	17	66,55	69,55	72,85	76,45	84,35	9,20
32	24.0	31.9	17	79,75	82,65	85,95	93,10	95,80	10,50
38	28.0	37.9	17	85,50	89,15	92,80	97,15	106,35	10,50

Punches with key-flat against surcharge.

Without detailed specification the key-flat is parallel to the major axis of surface a.

Intermediate diameters, other lengths and special materials e.g. ASP, CPM and Vanadis, are available on request. See page 2 for extra charges and discount.

Extra charges and discounts:

- 1 Pieces per dimension + 50%
- 2-3 Pieces per dimension + 25%
- 25 Pieces per dimension - 5%
- 50 Pieces per dimension - 7%
- 100 Pieces per dimension - 10%