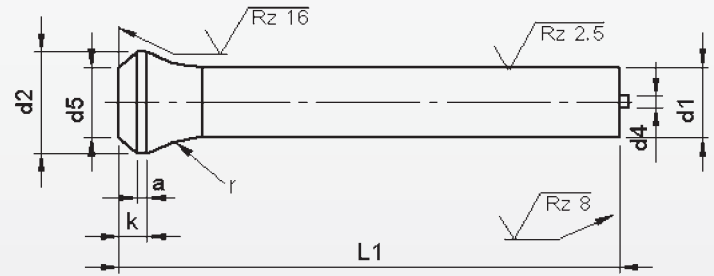
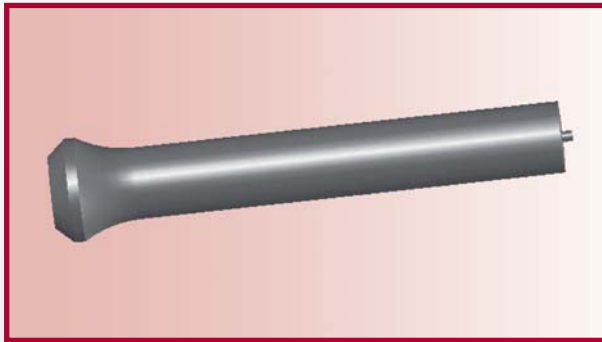


Punches with bottle neck type EP

With ejector



Material: HSS (1.3343)
Hardness: Shaft: 64 ±2 HRC
 Head: 50 ±5 HRC

d ₁	d ₂	k	a	d ₅	r	d ₄	l ₁				
							71	80	90	100	120
h6	0 -0.2	+0.2 0					Price by piece in EUROS				
6	9.0	4.0	1.5	d _t ± 0.1	12.0	1	18,25	19,10	20,30	21,35	23,60
6.5	10.0					17,60	18,50	19,75	20,85	23,20	
7	10.0					17,95	18,90	20,20	21,35	23,80	
7.5	11.0					18,30	19,30	20,65	21,85	24,40	
8	11.0					18,75	19,75	21,20	22,40	25,10	
8.5	13.0					19,15	20,20	21,60	22,85	25,60	
9	13.0				19,55	20,65	22,00	23,30	26,10		
9.5	14.0				19,95	21,10	22,40	26,75	26,60		
10	14.0				20,40	21,55	22,80	24,20	27,20		
10.5	15.0				20,90	22,10	23,40	24,85	28,00		
11	15.0				21,40	22,65	24,00	25,50	28,80		
11.5	16.0				21,90	23,20	24,60	26,15	29,60		
12	16.0				22,40	23,75	25,20	26,80	30,40		
12.5	17.0				22,90	24,30	25,80	27,45	31,20		
13	17.0				23,40	24,80	26,40	28,15	32,00		
13.5	18.0				23,95	25,40	27,10	28,90	32,90		
14	18.0				24,50	26,00	27,80	29,65	33,80		
14.5	19.0				25,05	26,60	28,50	30,40	34,70		

Intermediate diameters, other lengths and special materials e.g. ASP, CPM and Vanadis, are available on request.

See page 2 for extra charges and discount.