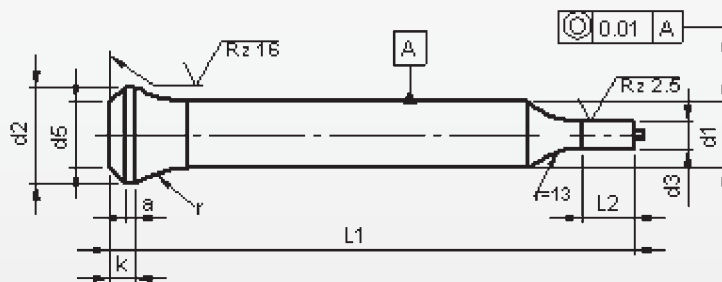
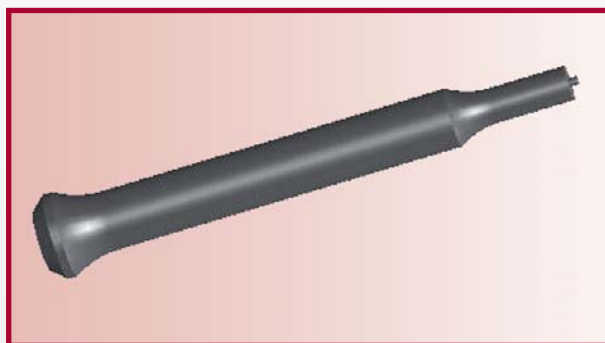


# Punches with bottle neck type EPP

With ejector and reduced shaft 'Round'



**Material:** HSS (1.3343)  
**Hardness:** Shaft: 64 ±2 HRC  
 Head: 50 ±5 HRC

d <sub>1</sub>	d <sub>3</sub>		l <sub>2</sub>	l <sub>1</sub>				
				71	80	90	100	120
	≥	<sup>h6</sup> —	≤	<b>Price by piece in EUROS</b>				
15	10,0	—	14,9	32,55	33,15	36,15	38,10	42,55
15.5	10,5	—	15,4	33,10	33,75	36,85	38,85	43,45
16	12,0	—	15,9	33,70	35,50	37,45	39,60	44,30
16.5	12,5	—	16,4	36,85	38,70	40,70	42,90	47,75
17	13,0	—	16,9	37,30	39,20	41,25	43,50	48,50
17.5	13,0	—	17,4	37,75	39,70	41,80	44,10	49,25
18	13,5	—	17,9	38,20	40,20	42,35	44,70	50,00
18.5	13,5	—	18,4	38,65	40,70	42,90	45,30	50,75
19	14,0	—	18,9	39,10	41,20	43,45	45,90	51,50
19.5	15,0	—	19,4	39,55	41,70	44,00	46,50	52,25
20	16,0	—	19,9	40,15	42,30	44,65	47,25	53,00

Intermediate diameters, other lengths and special materials e.g. ASP, CPM and Vanadis, are available on request.

**Extra charges and discounts:**

- 1 Pieces per dimension + 50%
- 2-3 Pieces per dimension + 25%
- 25 Pieces per dimension - 5%
- 50 Pieces per dimension - 7%
- 100 Pieces per dimension - 10%