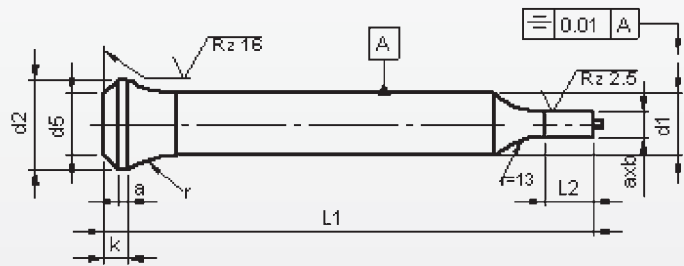
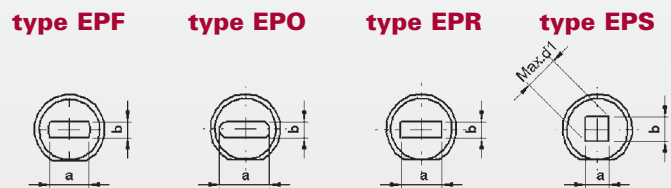


Punches with bottle neck type EP..

With ejector with reduced shaft 'Form'



Material: HSS (1.3343)
Hardness: Shaft: 64 ±2 HRC
 Head: 50 ±5 HRC



d ₁	axb		l ₂ +0.5 0	l ₁					Locking flat
	≥	± 0.01 — ≤		71	80	90	100	120	
Price by piece in EUROS									
15	10,0	—	14,9	45,60	46,20	49,20	51,15	55,60	5,25
15.5	10,5	—	15,4	46,15	46,80	49,90	51,90	56,50	
16	12,0	—	15,9	46,75	48,55	50,50	52,65	57,35	7,90
16.5	12,5	—	16,4	57,70	59,55	61,55	63,75	68,60	
17	13,0	—	16,9	58,15	60,05	62,10	64,35	69,35	
17.5	13,0	—	17,4	58,60	60,55	62,65	64,95	70,10	
18	13,5	—	17,9	59,05	61,05	63,20	65,55	70,85	
18.5	13,5	—	18,4	59,50	61,55	63,25	66,15	71,60	
19	14,0	—	18,9	59,95	62,05	64,30	66,75	72,35	
19.5	15,0	—	19,4	60,40	62,55	64,85	67,35	73,10	
20	16,0	—	19,9	61,00	63,15	65,50	68,10	73,85	

Punches with key-flat against surcharge.

Without detailed specification the key-flat is parallel to the major axis of surface a.

Intermediate diameters, other lengths and special materials e.g. ASP, CPM and Vanadis, are available on request. See page 2 for extra charges and discount.

Extra charges and discounts:

- 1 Pieces per dimension + 50%
- 2-3 Pieces per dimension + 25%
- 25 Pieces per dimension - 5%
- 50 Pieces per dimension - 7%
- 100 Pieces per dimension - 10%