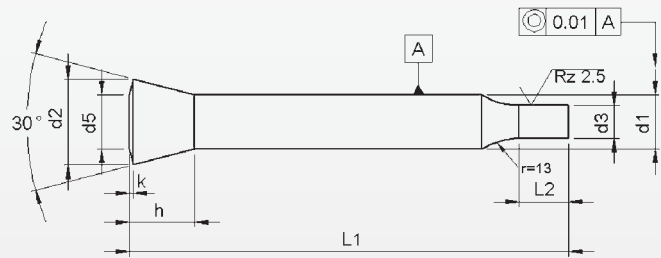


Punches with conical head 30°

With reduced shaft 'Round'



Material: HSS (1.3343)

Hardness: Shaft: 64 ±2 HRC

Head: 50 ±5 HRC

d1	d3		l2	l1 ^{+1.0} / ₀					
				71	80	90	100	120	
h6	≥	h6 — ≤	+0.5 +0.0	Price by piece in EUROS					
4	1,6	—	3,9	10	8,25	8,80	9,70	10,55	
5	2,5	—	2,4	10	8,50	9,10	9,75	10,40	11,95
6	3,0	—	2,9	10	9,80	10,50	11,20	12,00	13,75
7	3,0	—	6,9	10	11,55	12,35	13,20	14,15	16,25
8	4,0	—	7,9	13	12,90	13,80	14,80	15,90	18,35
9	4,5	—	8,9	13	14,80	15,70	16,70	17,80	20,25
10	5,0	—	9,9	17	16,00	17,15	18,40	19,95	22,85
11	5,0	—	10,9	17	17,95	19,00	19,35	21,75	24,70
12	6,0	—	11,9	17	19,30	20,70	22,30	24,00	27,80
13	9,0	—	12,9	17	20,30	21,70	23,30	25,00	28,80
14	9,5	—	13,9	17	23,20	24,70	26,15	27,85	31,65
15	10,0	—	14,9	17	24,20	25,90	27,80	29,85	34,50
16	12,0	—	15,9	17	25,20	26,90	28,80	30,85	35,50

Intermediate diameters, other lengths and special materials e.g. ASP, CPM and Vanadis, are available on request.

Extra charges and discounts:

- 1 Pieces per dimension + 50%
- 2-3 Pieces per dimension + 25%
- 25 Pieces per dimension - 5%
- 50 Pieces per dimension - 7%
- 100 Pieces per dimension - 10%