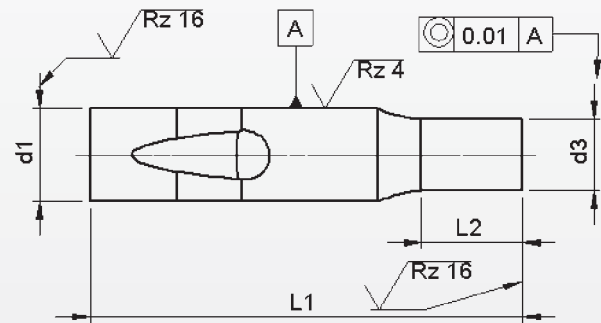
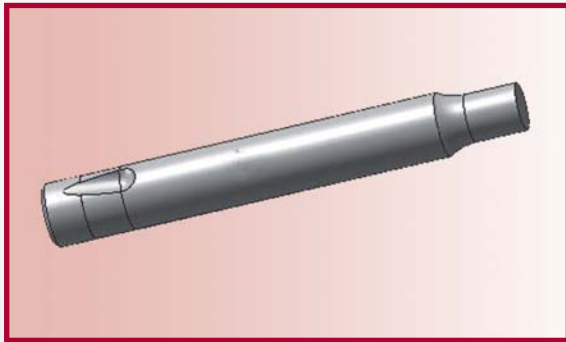


Ball-Lock punch type BTP

With reduced shaft 'Round'



Material: HSS (1.3343)

Hardness: Shaft: 64 ±2 HRC

Head: 50 ±5 HRC

d ₁	d ₃		l ₂	l ₁ ^{+0.3} / _{+0.2}					
				63/71	80	90	100	125	
h5	≥	^{+0.01} / _{-0.0}	≤	Price by piece in EUROS					
6	3,0	—	5,9	10	11,00	11,60	12,30	13,10	14,70
10	5,0	—	9,9	17	14,65	15,45	16,50	17,50	19,85
13	9,0	—	12,9	17	17,60	18,60	19,85	21,20	24,10
16	12,0	—	15,9	17	21,95	23,35	24,80	26,45	29,95
20	16,0	—	19,9	17	27,55	29,15	31,00	33,00	37,30
25	20,0	—	24,9	17	34,30	36,35	38,60	41,05	46,45

Intermediate diameters, other lengths and special materials e.g. ASP, CPM and Vanadis, are available on request.

Extra charges and discounts:

- 1 Pieces per dimension + 50%
- 2-3 Pieces per dimension + 25%
- 25 Pieces per dimension - 5%
- 50 Pieces per dimension - 7%
- 100 Pieces per dimension - 10%